

SRS RECOVERY GUI INTERFACE

Overview

SRS users can now look at all SRS recovery attempts and easily identify which jobs were recovered and which jobs were not using a new PC based GUI Interface. No longer do users have to look at SMF data or rerun jobs to look at trace information to see why a job was not recovered. Every SRS recovery attempt can be displayed at your PC. Installations can save recovery information for historical reporting purposes. The Graphical User Interface also allows sorting, graphing and computational operations on the captured data.

How Does it Work?

The SRS Selection Language must be modified to capture recovery activity and transfer those records to the Dynamic Install Facility (DIF) address space. DIF writes the records to a log file that can be accessed by the SCC Explorer GUI. At user defined intervals, the records are transferred to a PC running Windows 2000 or XP and displayed in the SCC-Explorer GUI.

License

Every SRS User with a current maintenance agreement can obtain a special license code for the SCC Explorer that will allow the display of SRS recovery data. To help demonstrate the power and elegance of the SCC Explorer GUI, this license code will also allow the user to use the MVS Console command interface. For the full version of the SCC Explorer, an additional license code is required.

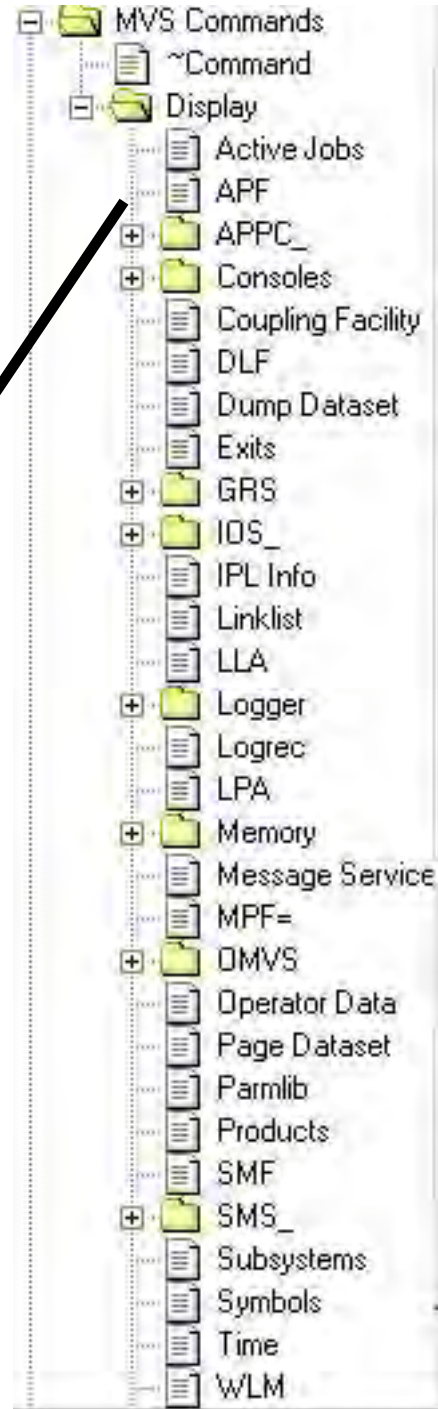
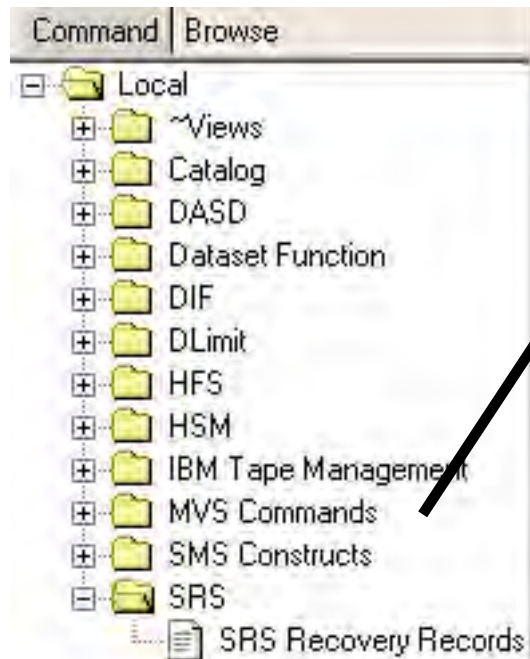
MVS Console Display

The SCC Explorer can display the output from virtually all MVS Console commands using the GUI. Forgotten the command to list all of the APF libraries? If you know how to point and click, you can use the SCC Explorer to find the answer. The Menu tree and sample output are shown on the next page.

For more information on all of the DTS Software products, call 770 922-2444 or to send email info@DTSsoftware.com

SYSPLEX	SYSID	CURDATE	CURTIME	JOBNAME	DSNAME	VOLSER	ENV
ADCDPL	P390	09/08/2004	13:46:12	RAYX	SYS04252.T134611.RA000.RAYX.TEST.H01	STOR05	SETSEC
ADCDPL	P390	09/08/2004	13:47:58	RAYX	SYS04252.T134758.RA000.RAYX.TEST.H01	STOR01	SETSEC
ADCDPL	P390	09/08/2004	13:48:00	RAYX	SYS04252.T134758.RA000.RAYX.TEST.H01	DMPVOL	ADDVOL
ADCDPL	P390	09/20/2004	13:01:36	RAY1	SYS04264.T130136.RA000.RAY1.SCCIVP1.H01		REDUCEP
ADCDPL	P390	09/20/2004	13:04:19	RAY1	SYS04264.T130419.RA000.RAY1.SCCIVP1.H01		REDUCEP
ADCDPL	P390	09/20/2004	13:07:22	RAYX	SYS04264.T130722.RA000.RAYX.SCCIVP1.H01	STOR05	REDUCEP
ADCDPL	P390	09/20/2004	13:07:23	RAYX	SYS04264.T130722.RA000.RAYX.SCCIVP2.H01	STOR05	SETSEC
ADCDPL	P390	09/20/2004	13:14:14	RAYX	SYS04264.T131413.RA000.RAYX.SCCIVP1.H01	STOR05	REDUCEP
ADCDPL	P390	09/20/2004	13:14:14	RAYX	SYS04264.T131413.RA000.RAYX.SCCIVP2.H01	STOR05	SETSEC
ADCDPL	P390	09/20/2004	13:16:03	RAYX	SYS04264.T131603.RA000.RAYX.SCCIVP1.H01	STOR05	REDUCEP
ADCDPL	P390	09/20/2004	13:16:04	RAYX	SYS04264.T131603.RA000.RAYX.SCCIVP2.H01	STOR01	SETSEC
ADCDPL	P390	09/20/2004	13:16:06	RAYX	SYS04264.T131603.RA000.RAYX.SCCIVP2.H01	STOR04	ADDVOL

SRS RECOVERY GUI INTERFACE



Command: APF List

Close Export Print Preview Filter

Grid | Data

ENTRY	VOLUME	DSNAME
1	Z5RES1	SYS1.LINKLIB
2	Z5RES1	SYS1.SVCLIB
3	Z5RES1	SYS1.MIGLIB
4	Z5RES1	SYS1.SERBLINK
5	Z5RES1	SYS1.CSSLIB
6	Z5RES2	EQA410.SEQABMOD
7	Z5RES2	EQA410.SEQAAUTH
8	Z5RES2	GIM.SGIMLMDO
9	Z5RES2	IGY330.SIGYCOMP
10	Z5RES2	FAN140.SEAGLPA
11	Z5RES1	DIT130.SDITMOD1

